

# Surpass SD Pneumatic valve

## FEATURES

- Corrosion-resistant PTFE is used for all wetted parts, providing excellent chemical resistance and long-term durability.
- A proprietary simple structure with unique flow channels is incorporated into the design.
- An indicator is installed as standard to allow confirmation of the valve's operating condition (except for flow control models).
- Polypropylene is used as the material for the actuator section.

**Caution:** Do not overtighten the flow rate adjustment knob.

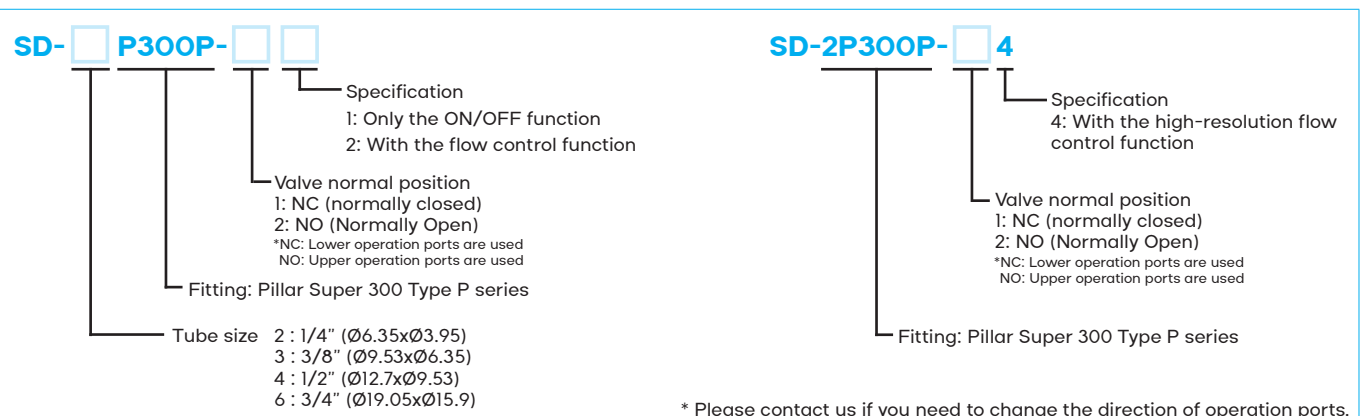


## MODELS / SPECIFICATIONS

Type	SD-2P300P-□□	SD-3P300P-□□	SD-4P300P-□□	SD-6P300P-□□
Fluids	Gas, Liquids, DI water, Chemicals			
Body size	□30	□30	□40	□40
Tube size	1/4"	3/8"	1/2"	3/4"
	Ø6.35xØ3.95	Ø9.53xØ6.35	Ø12.7xØ9.53	Ø19.05xØ15.9
Connection type	Pillar fitting			
Orifice diameter	Ø4	Ø7	Ø10	Ø16
Cv value	0.3	0.8	2.3	5.1
Pressure range A → B	0-500kPa		0-300kPa	
Back pressure B → A	0-300kPa		0-200kPa	
Operating pressure	300-500kPa			
Withstanding pressure	1MPa			
Control port	Rc1/8			
Valve seat leakage	0mL/min (water pressure)*			
Fluid temperature	0-90°C			
Ambient temperature	0-60°C			
Operational frequency	Less than 20 operations/min			
Mounting positions	Flexible			
Wetted parts	PTFE			

\* When using gas such as N2 or air, valve seat leakage could occur up to 1cm<sup>3</sup> / min. (At pneumatic pressure)

## MODELS

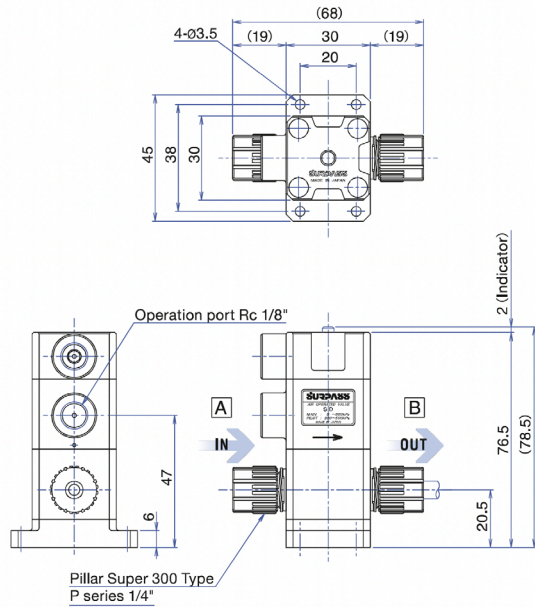


062026REV1

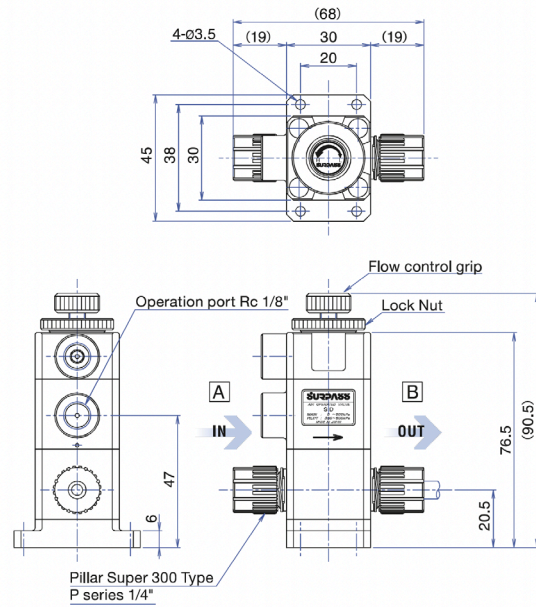


**DIMENSIONS**

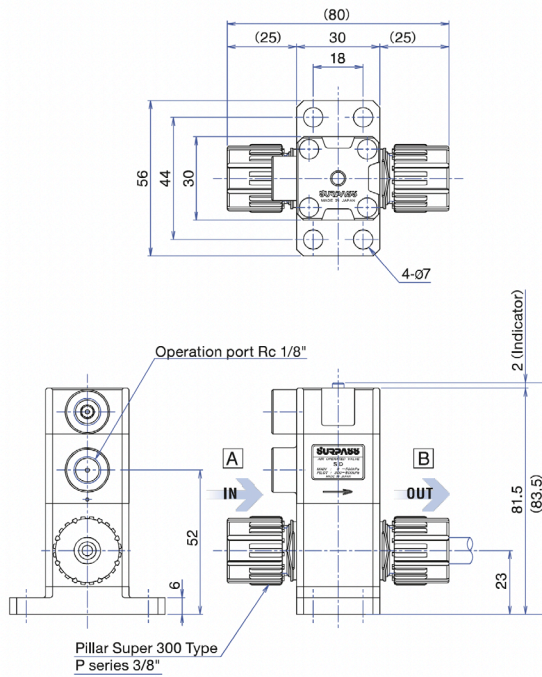
- SD-2P300P-□ 1



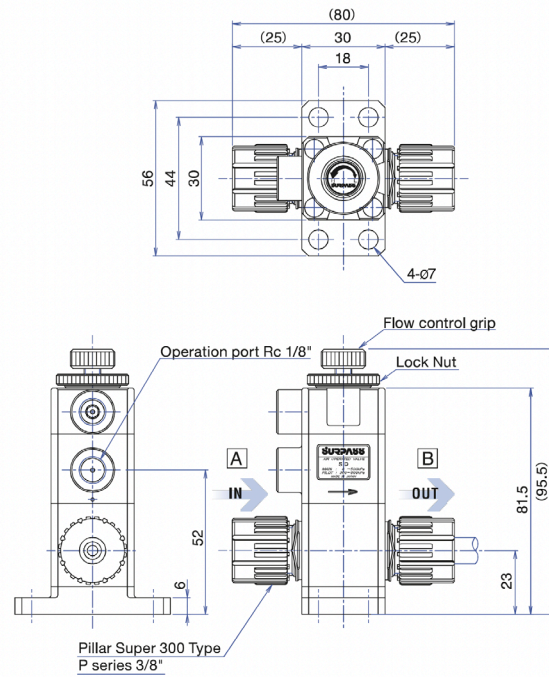
- SD-2P300P-□ 2 (with the flow control function)
- SD-2P300P-□ 4 (with the high-resolution flow function)



- SD-3P300P-□ 1



- SD-3P300P-□ 2 (with the flow function)

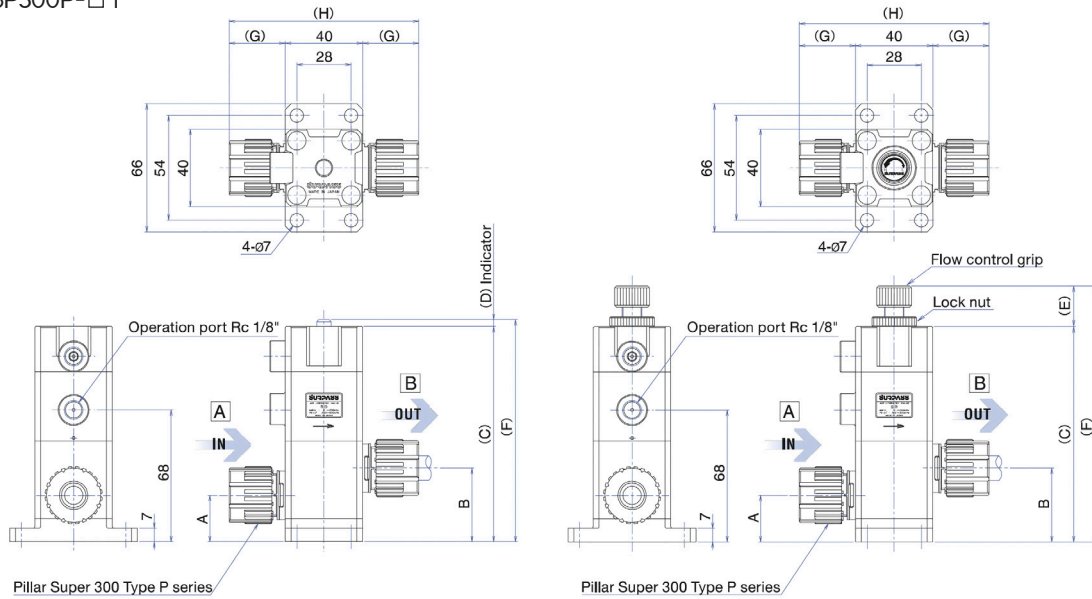


\* The above drawing is a reference for NC (Normally Closed) have selected

**DIMENSIONS**

- SD-4P300P-□ 1
- SD-6P300P-□ 1

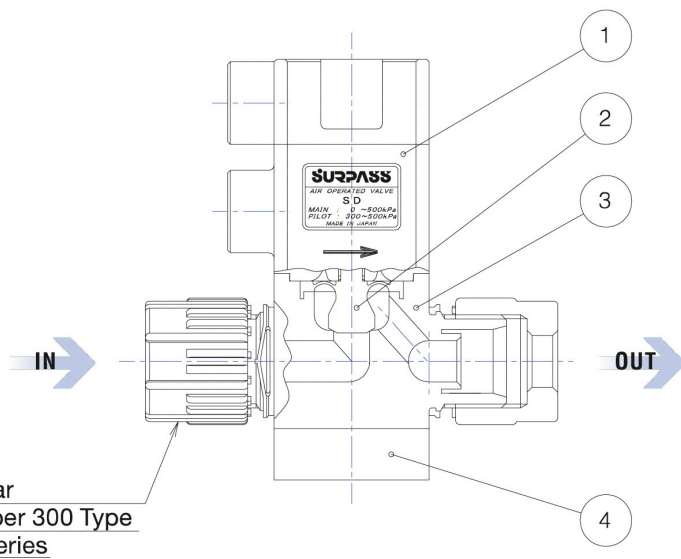
- SD-4P300P-□ 2 (with the flow control function)
- SD-6P300P-□ 2 (with the flow control function)



\* The above drawing is a reference for NC (Normally Closed) have selected

Model	A	B	(C)	(D)	(E)	(F)	(G)	(H)
SD-4P300P-□ 1	24	38	111	3.5	-	114.5	29	98
SD-4P300P-□ 2	24	38	111	-	21	132	29	98
SD-6P300P-□ 1	28	48	124.4	3.5	-	127.9	36	112
SD-6P300P-□ 2	28	48	124.4	-	21	145.4	36	112

**INSIDE MATERIALS**

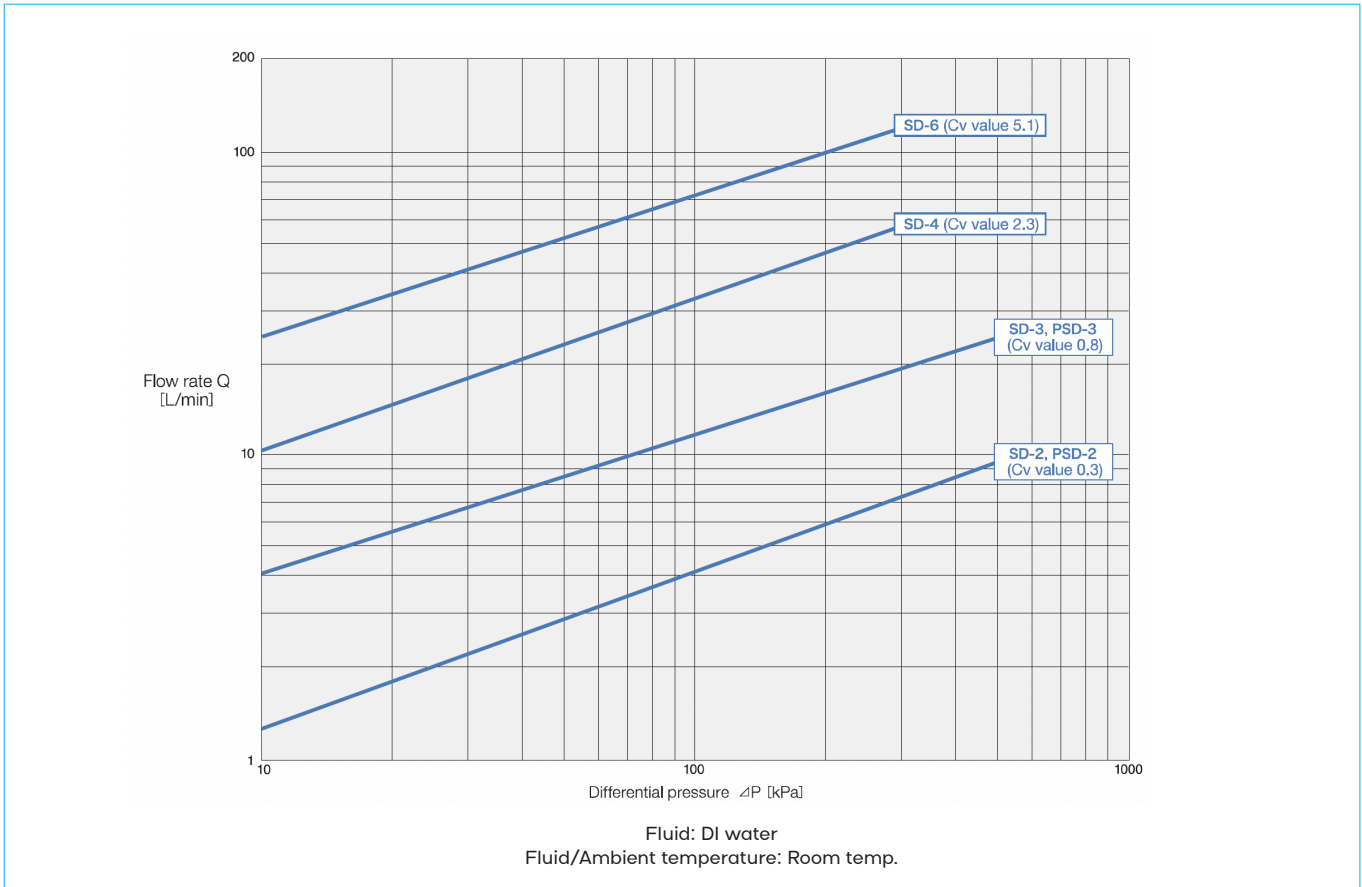


No.	Name	Materials	
		SD	PSD
1	Actuator	PP	PVDF
2	Diaphragm	PTFE	PTFE
3	Body	PTFE	PTFE
4	Base	PP	PVDF

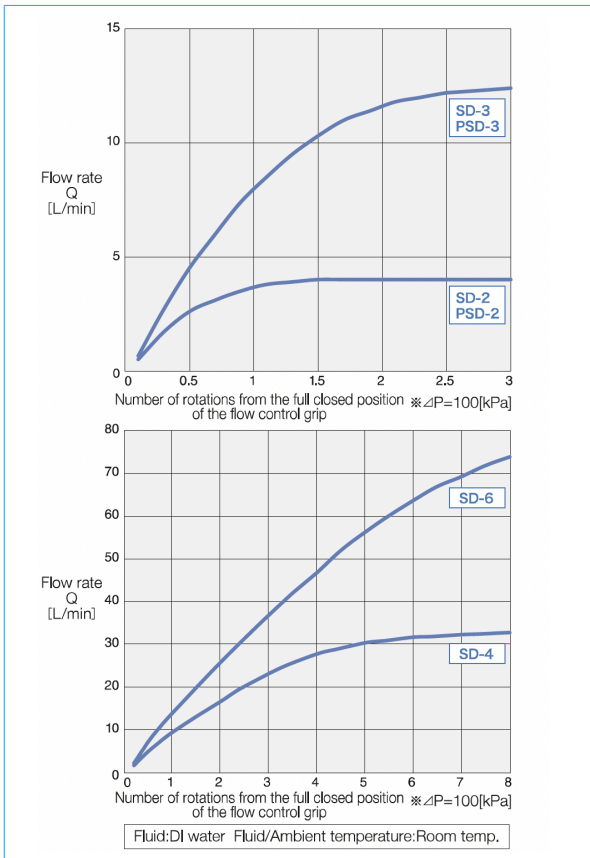
062026REV1



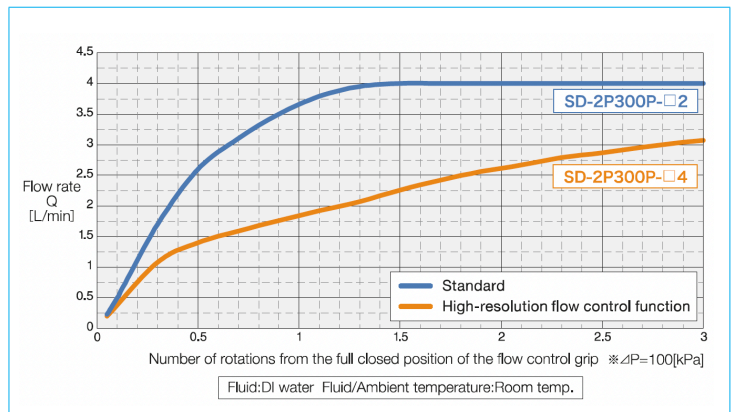
**FLOW CHARACTERISTICS**



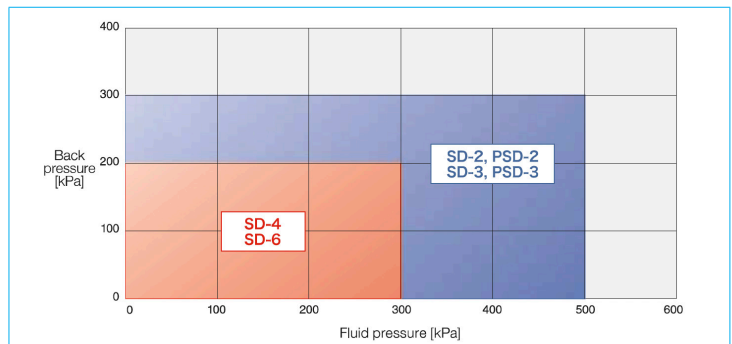
**FLOW RATE CONTROL CHARACTERISTICS**



**FLOW RATE CONTROL CHARACTERISTICS (WITH THE HIGH-RESOLUTION FLOW CONTROL FUNCTION)**



**OPERATING FLUID PRESSURE RANGE**



062026REV1

