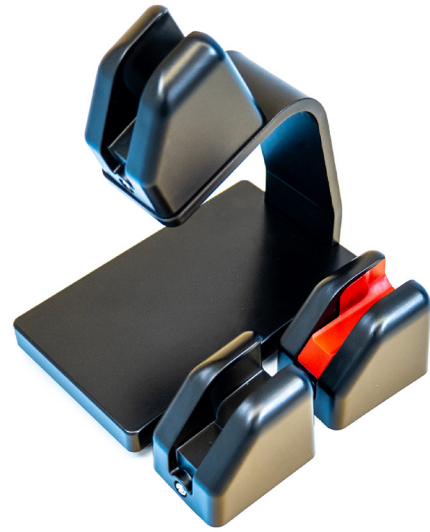


VACUUM WAND HOLDER SERIES

WHS provides versatile mounting solutions for vacuum wands, designed for cleanroom environments that demand reliable, ESD-safe storage. Manufactured from black antistatic polycarbonate, these holders ensure both impact and abrasion resistance, maintaining compatibility with ISO Class 3 cleanroom standards.

The WHS-V4-WM is the standard wall-mount holder, engineered for easy slide-in use with normally open (N.O.) vacuum wands. Its universal fit accommodates all N.O.

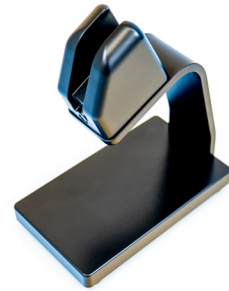
WHS vacuum wand handles and many competitor models. The holder features a durable stainless steel mounting bracket for secure installation on workstations, walls, or tools. Its compact, low-profile design ensures ergonomic access and a reliable, tight-hold resting place for wands during operation.



WHS-V4-WM



WHS-V4-WMNC



WHS-V4-TT

The WHS-V4-TT offers a portable alternative with a weighted tabletop pedestal base, allowing operators to easily move the wand holder across a workstation. This flexibility is ideal for multi-operator environments where both right- and left-handed users require access.

For special applications, the WHS-V4-WMNC is designed for normally closed vacuum wands. It features a red polycarbonate insert to differentiate between normally open and normally closed systems, ensuring proper storage and ESD safety. Like the WHS-V4-WM, it includes stainless steel hardware for secure surface mounting.

All WHS-V4 holders are engineered with precision molding for accuracy and repeatability, providing a reliable and ergonomic solution for vacuum wand storage in demanding semiconductor environments.

FEATURES AND ADVANTAGES

- Antistatic black polycarbonate for ESD-safe storage
- Universal fit for WHS and competitor vacuum wands
- WHS-V4-WM: Wall-mount with stainless steel bracket
- WHS-V4-TT: Portable, weighted tabletop holder for flexibility
- WHS-V4-WMNC: Special holder for normally closed wands

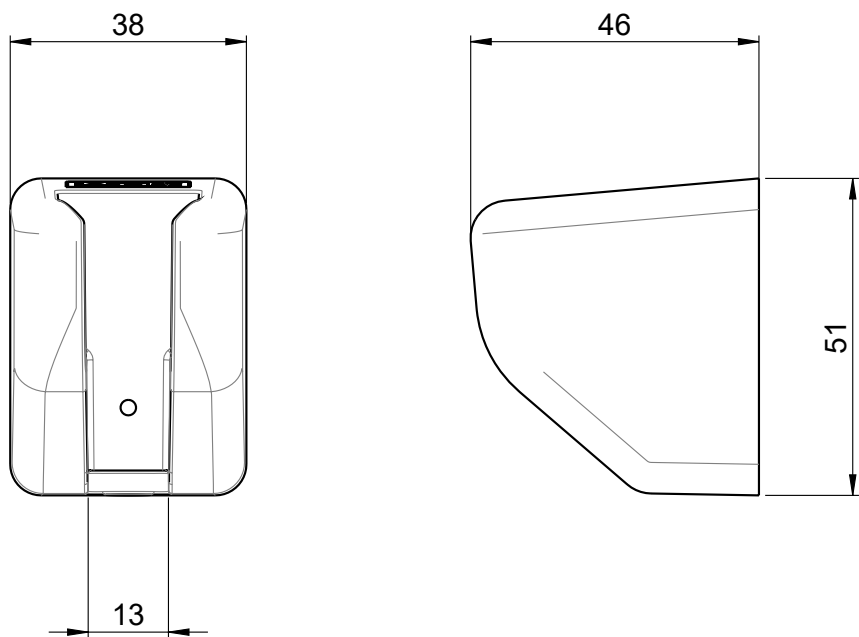
VACUUM WAND HANDLE SERIES

ITEM	SPECIFICATIONS
Style, standard	Vacuum shutoff, for normally open
Material, body	Antistatic polycarbonate
Material, pedestal base	Powder coated steel
Cleanliness	ISO 3 (Class 1 FS209E)



ORDERING INFORMATION

WHS-V4-	WM
CODE	MODEL
WM	Vacuum wand holder, wall mount
WMNC	Vacuum wand holder, wall mount - NOTE normally closed
TT	Vacuum wand holder, tabletop



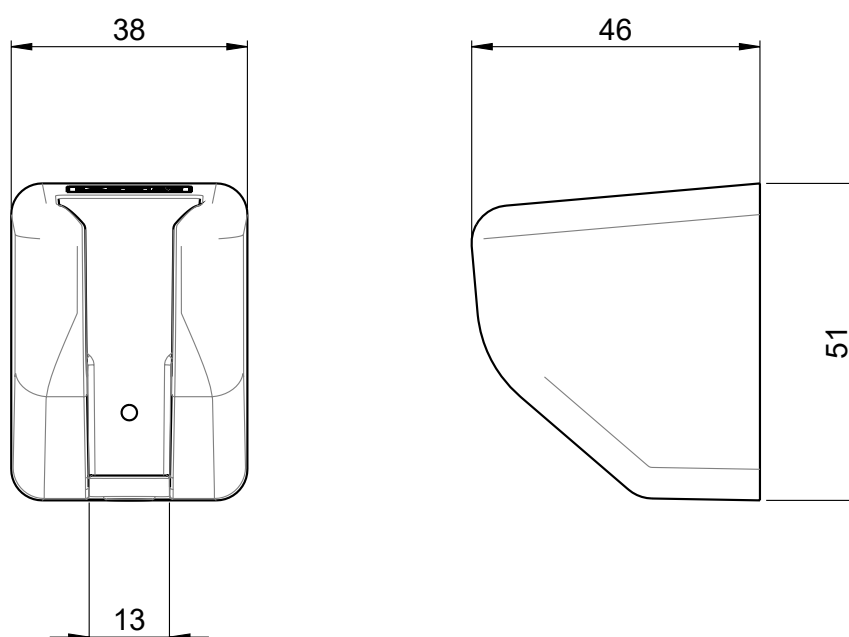
Materials:
Holder: Antistatic Polycarbonate
Mounting plate: Stainless Steel



WHS-V4-WM
Vacuum Wand Holder, Wall Mount

date: 01-10-2022 | scale: 1:2 | entity: mm | This drawing is owned by WHS trademark and may not be copied, reproduced or shown to third parties without written permission.

REV022025

**Materials:**

Holder: Antistatic Polycarbonate
Mounting plate: Stainless Steel

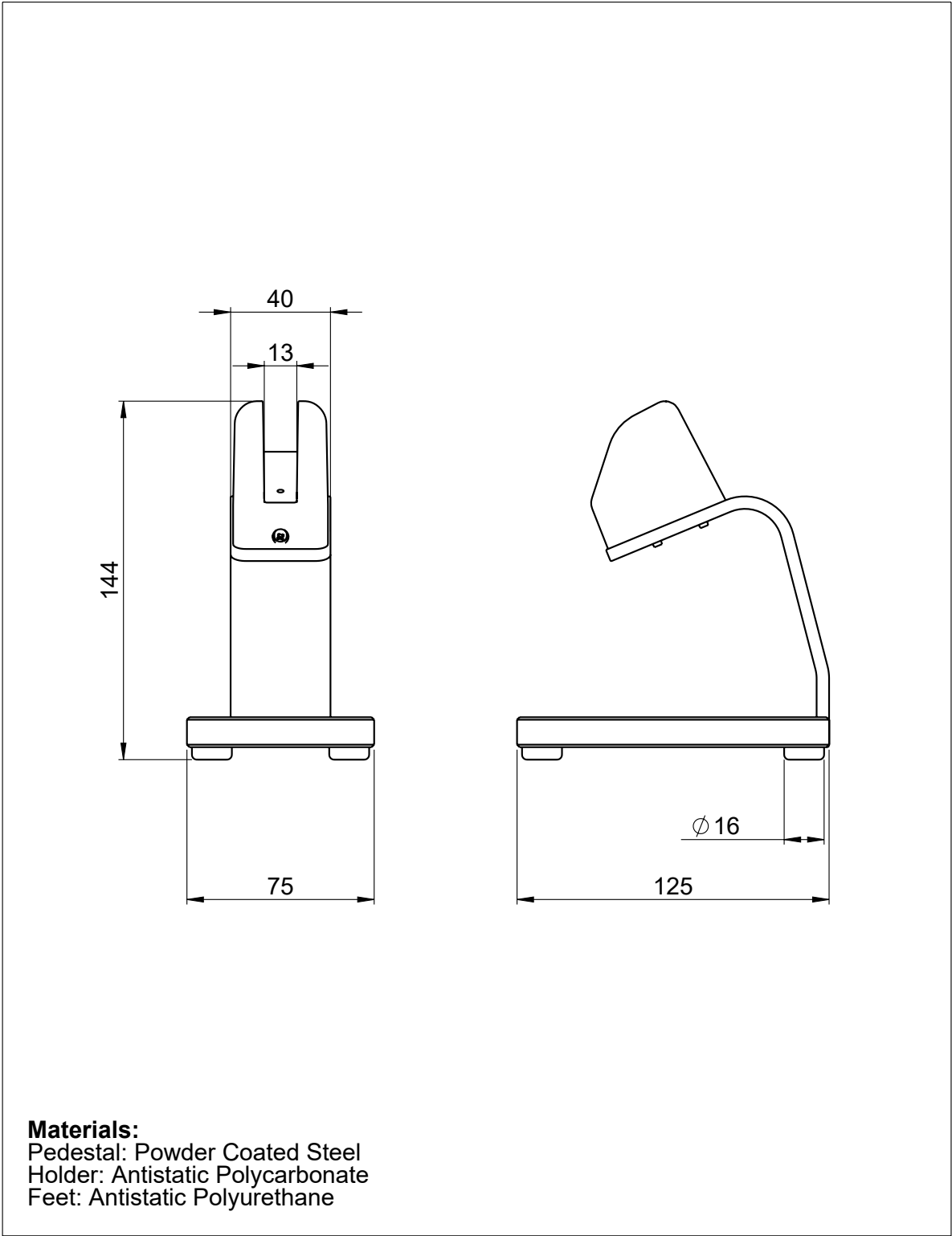


WHS-V4-WM

Vacuum Wand Holder, Wall Mount

date: 01-10-2022 | scale: 1:2 | entity: mm | This drawing is owned by WHS trademark and may not be copied, reproduced or shown to third parties without written permission.

REV020205



WHS-V4-TT

Vacuum Wand Holder, Tabletop

date: 01-10-2022 | scale: 1:2 | entity: mm | This drawing is owned by WHS trademark and may not be copied, reproduced or shown to third parties without written permission.

REV022025