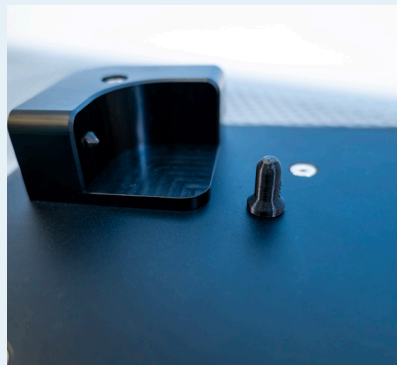
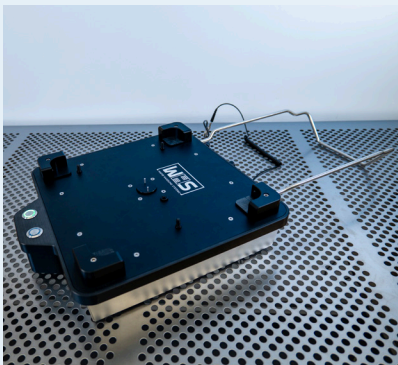
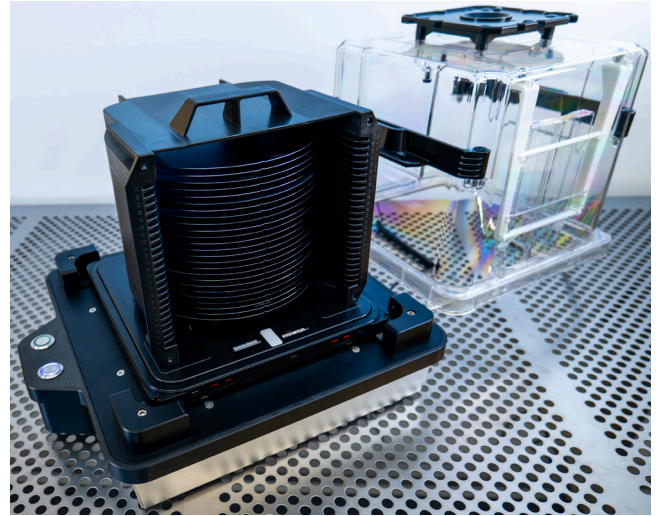


SEMI-AUTOMATIC SMIF POD OPENER

The WHS-O8-SMIF is a motorized, semi-automatic pod opener designed for the secure and efficient handling of SEMI E19.3 and E19.4 SMIF pods used for 200mm wafers. As a motorized upgrade to manual openers, the WHS-O8 simplifies pod handling with a push-button control system, allowing operators to unlock and close pod lids effortlessly. The motorized mechanism ensures smooth, consistent operation, improving workflow efficiency while maintaining the highest standards of protection for valuable wafers.

With the press of a button, the WHS-O8 unlocks the pod, allowing the operator to manually lift the lid. A second press of the button securely locks the lid back in place. The integrated stainless steel lid storage rack keeps the lid clean and free from contamination during wafer handling.



Built from antistatic and abrasion-resistant materials, the WHS-O8 ensures long-lasting durability and protection for wafers in ISO 3 cleanroom environments. Its compact design is ideal for semiconductor manufacturing, enhancing operator efficiency while maintaining cleanroom integrity.

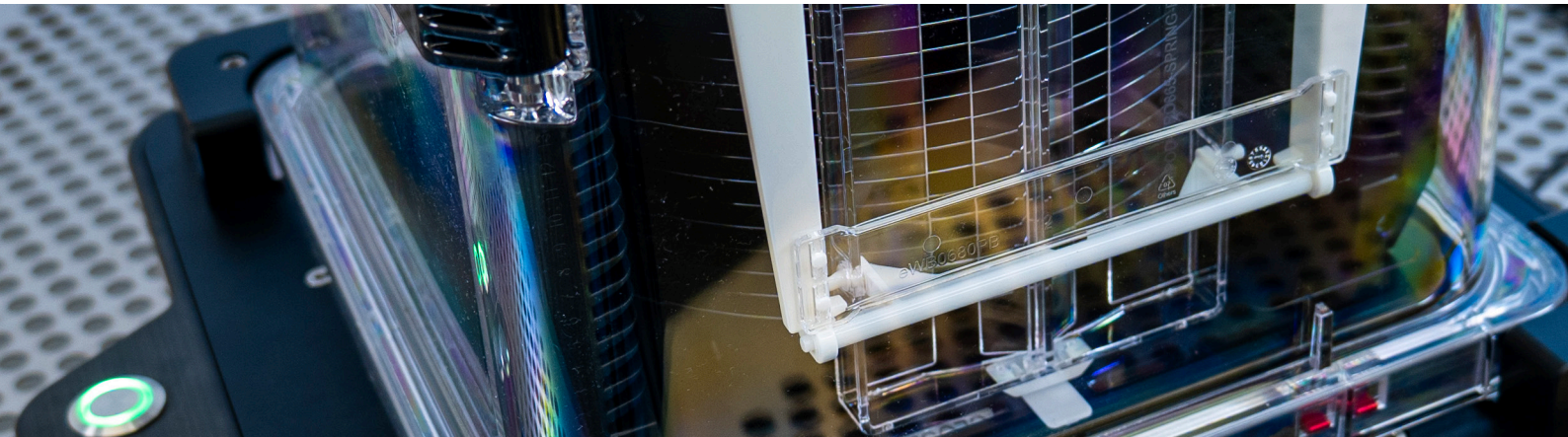
Compatible with all SEMI E19.3 and E19.4 SMIF pods, the WHS-O8 offers a high-performance, semi-automated solution for cleanroom pod handling. Manufactured in an ISO9001 certified facility and CE certified, the WHS-O8 delivers superior reliability and ease of use for SMIF pod operations.

FEATURES AND ADVANTAGES

- Motorized push-button control for effortless pod handling
- Antistatic and abrasion-resistant materials for enhanced protection
- Integrated stainless steel rack keeps lid contamination-free
- Compatible with all SEMI E100 RSP200 pods
- Compact design for efficient cleanroom integration

SEMI-AUTOMATIC SMIF POD OPENER

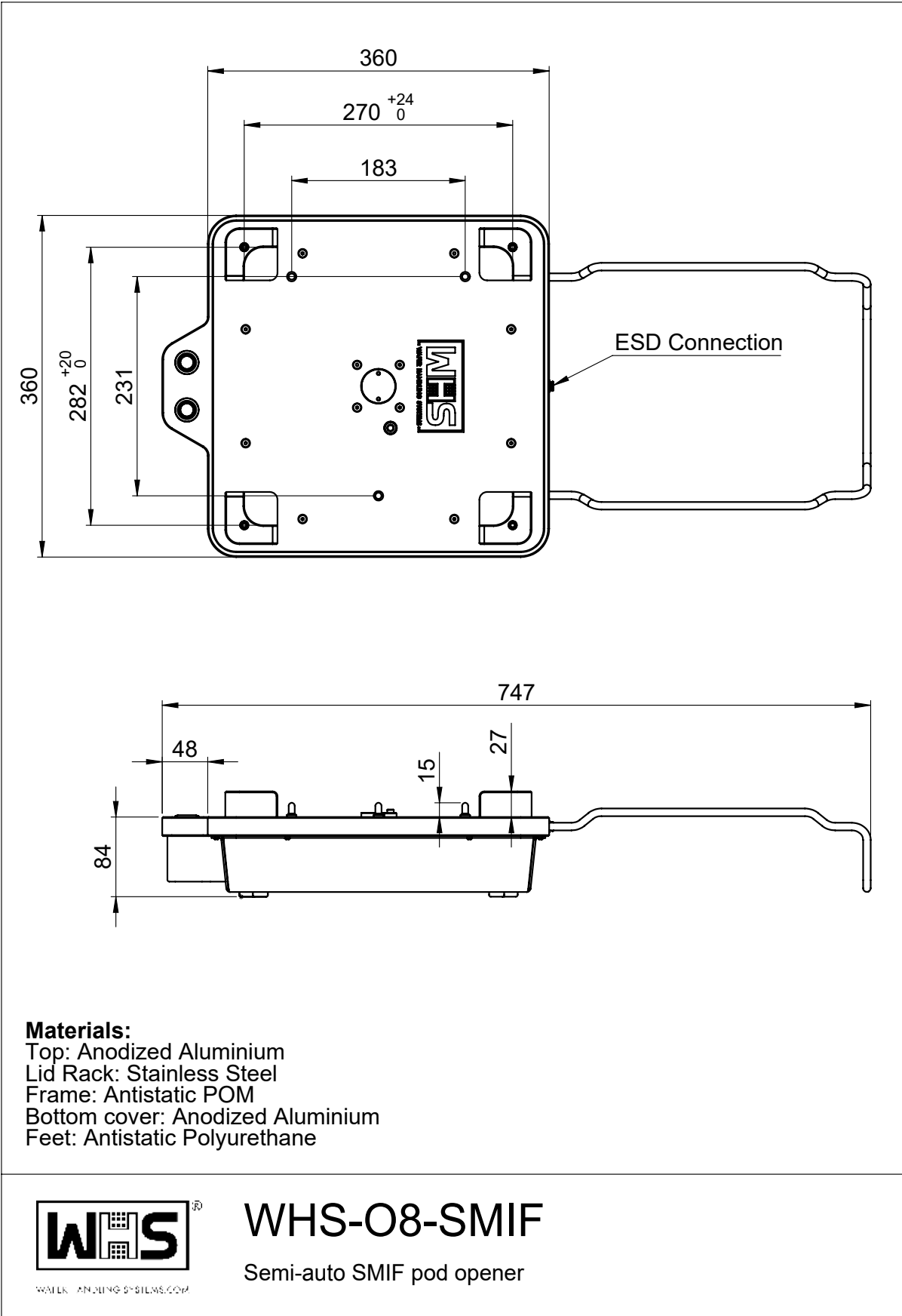
ITEM	SPECIFICATIONS
Pod type	SMIF (E19.3 or E19.4)
Material, base	Anodized aluminum
Material, lid rack	316 stainless steel
Material, guides	Antistatic Polyoxymethylene
Cleanliness	ISO 3 (Class 1 FS209E)



ORDERING INFORMATION

WHS-O8-	SMIF
CODE	MODEL
SMIF	Semi-auto SMIF pod opener

REV012025



date: 01-10-2022 | scale: 1:5 | entity: mm | This drawing is owned by WHS trademark and may not be copied, reproduced or shown to third parties without written permission.

REV012025