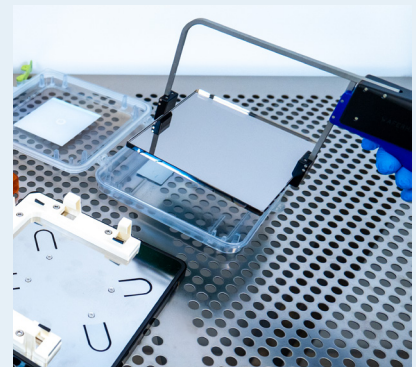
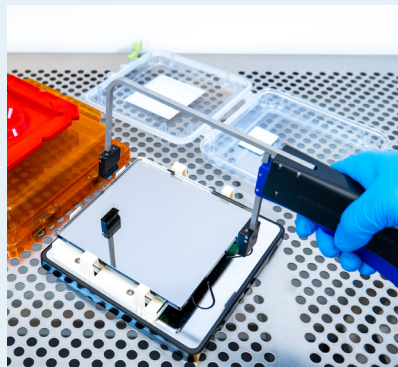
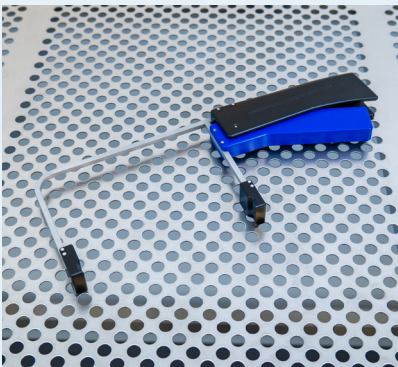
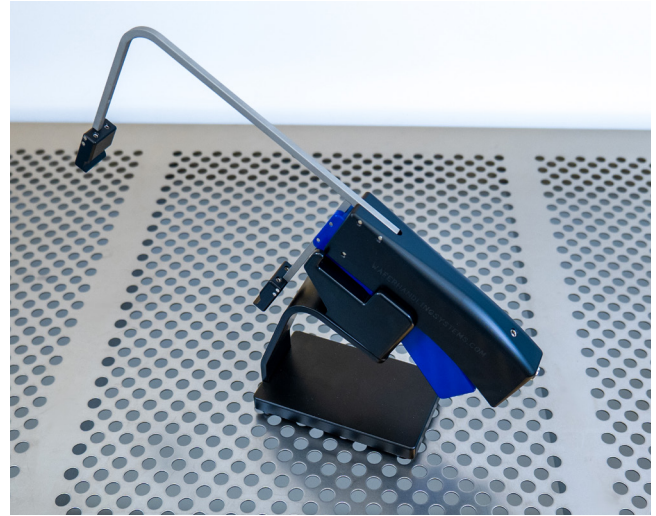


HORIZONTAL OFFSET MASK HANDLING PICK

The WHS-L2 series is a precision-engineered, normally-closed (consistent-force) mechanical pick designed for horizontal offset grip handling of 5" to 9" photomasks. By gripping from the tangential edge, the WHS-L2 reduces contamination risks by eliminating contact with sensitive chrome surfaces, making it ideal for critical semiconductor processes.

Constructed from advanced materials, the WHS-L2 ensures long-lasting durability with antistatic properties and excellent chemical resistance. It is designed for use in ISO 3 (FS209E Class 1) cleanrooms, meeting the highest standards of cleanliness and contamination control.

The WHS-L2 is highly versatile and suited for a wide range of applications, including manual transfers of



photomasks and reticles between storage boxes and production environments such as Reticle SMIF Pods, Nikon, and Canon reticle boxes. It is also ideal for macro integrity inspections during transfers, allowing operators to check for barcode IDs, particles, chrome defects, and damage to the pellicle frame or film. The tool is further optimized for use in mask aligners and metrology equipment.

The WHS-L2 ships with a specially designed tabletop pedestal holder that keeps the mask pick clean and protected from damage between uses, enhancing its longevity and maintaining performance.

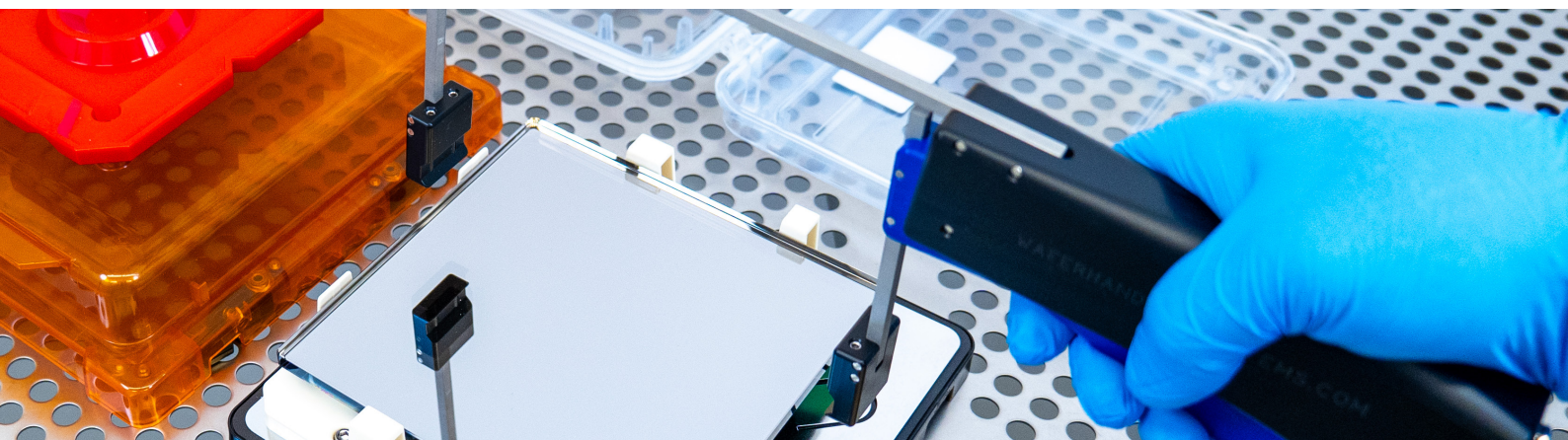
Manufactured in an ISO9001 certified facility and CE certified, the WHS-L2 meets international quality and safety standards, offering a robust and reliable solution for photomask handling in semiconductor fabrication and mask shops.

FEATURES AND ADVANTAGES

- Horizontal offset grip for 5" to 9" photomasks
- Prevents chrome contact, minimizing contamination
- Suitable for transfers, inspections, and mask aligners
- Antistatic, chemical-resistant for ISO 3 cleanrooms
- Comes with pedestal holder for protection between uses

HORIZONTAL OFFSET MASK HANDLING PICK

ITEM	SPECIFICATIONS
Mask sizes	5x5x0.090" , 6x6x0.120", 6x6x0.250", 7x7x0.120", 7x7x0.150", 9x9x0.120"
Material, gripper	Antistatic Polyoxymethylene
Material, gripper insert	Viton elastomer
Grip hold	Normally closed
Cleanliness	ISO 3 (Class 1 FS209E)

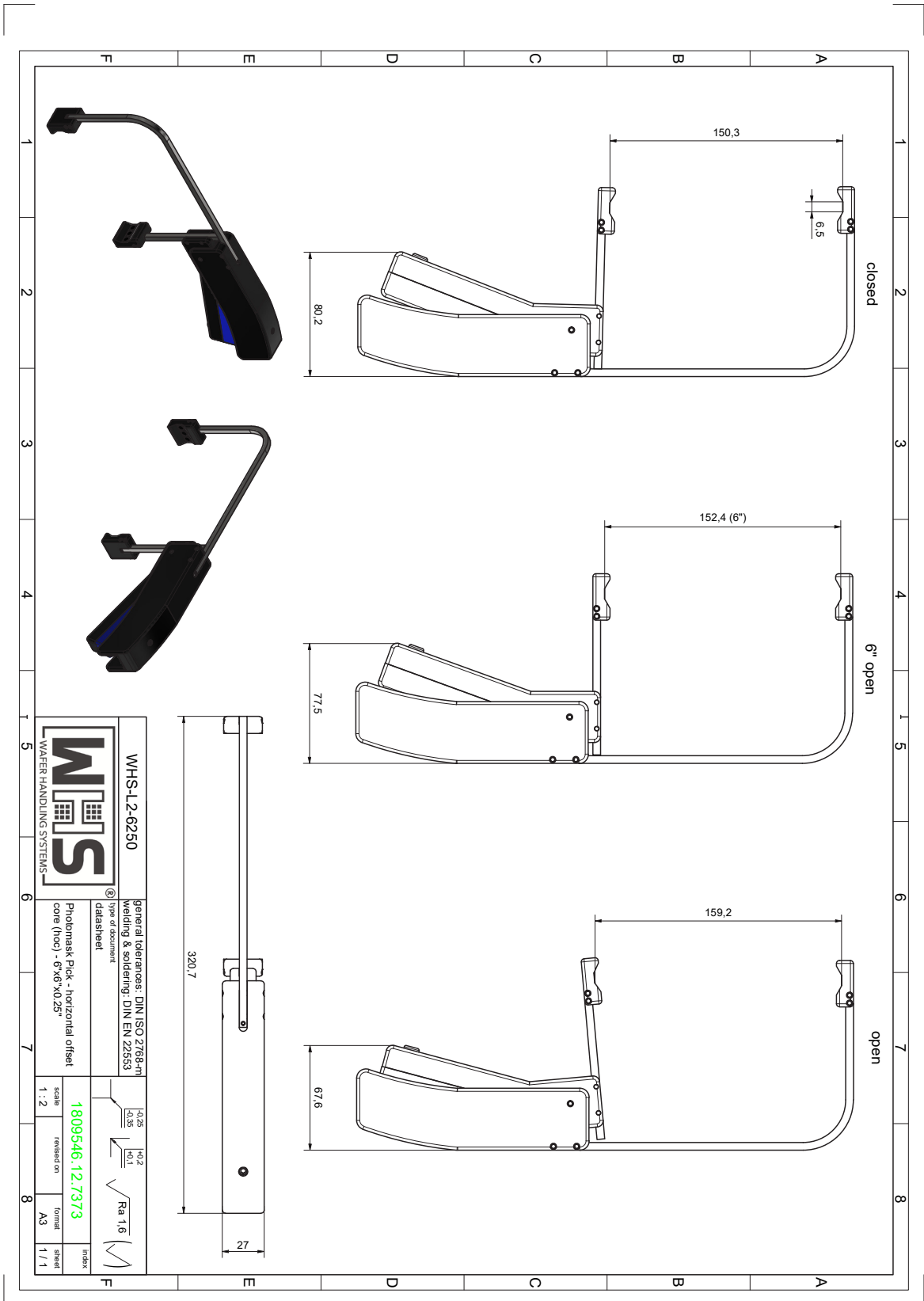


ORDERING INFORMATION

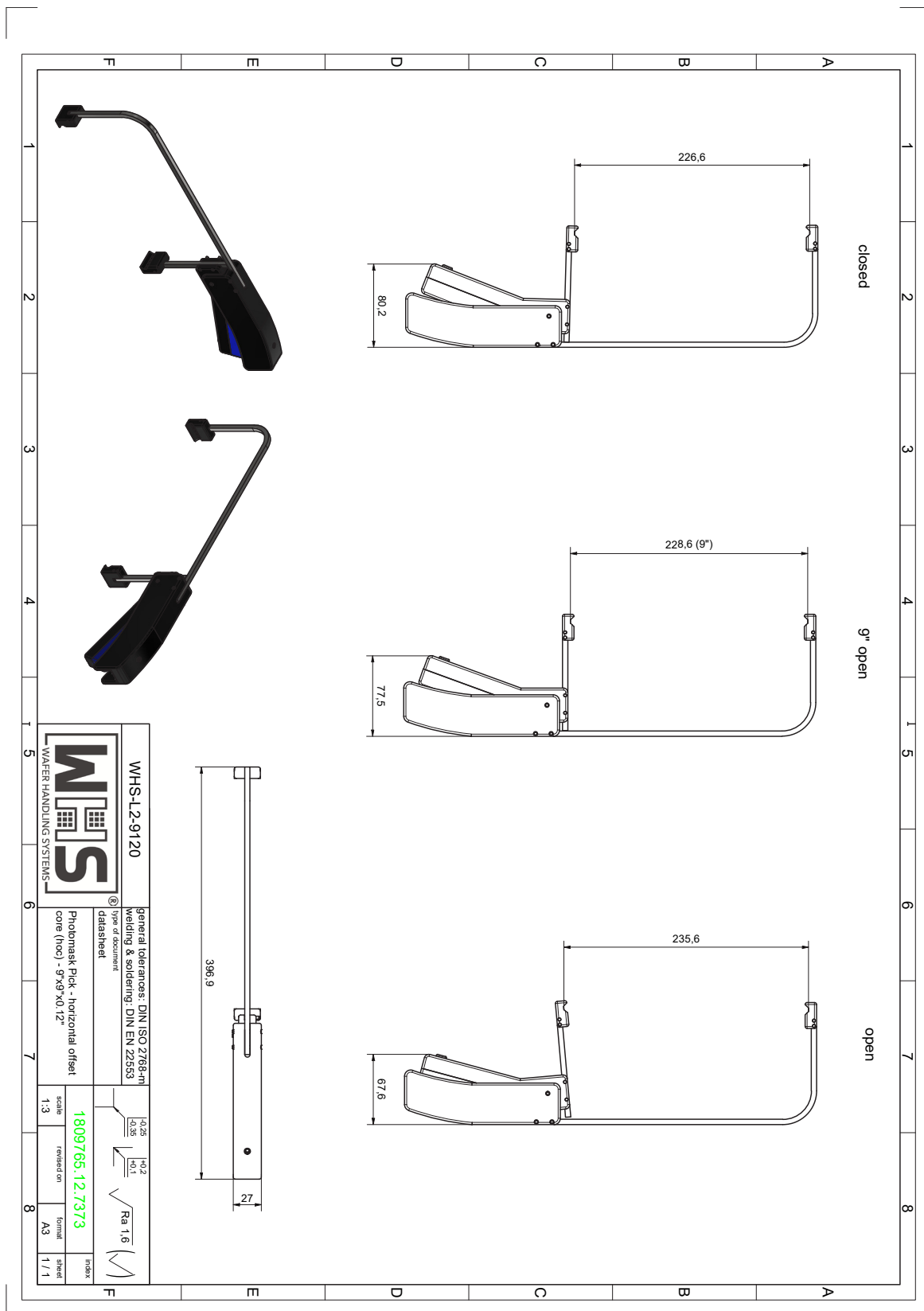
WHS-L2 -	5009
----------	------

CODE	MODEL
5009	Mechanical mask pick, horizontal 5x5x0.090
6120	Mechanical mask pick, horizontal 6x6x0.120
6250	Mechanical mask pick, horizontal 6x6x0.250
7120	Mechanical mask pick, horizontal 7x7x0.120
7150	Mechanical mask pick, horizontal 7x7x0.150
9120	Mechanical mask pick, horizontal 9x9x0.120

REV122024



REV122024



 <p>WHS WAFFER HANDLING SYSTEMS</p>		<p>WHS-L2-9120</p>	
		<p>general tolerances: DIN ISO 2768-mS welding & soldering: DIN EN 22553</p>	
<p>Phobmask Pick - horizontal offset core (hcc) - 9°x9°x0.12°</p>		<p>Type of document (data sheet)</p>	
<p>scale 1:3</p>		<p>1809765.12.7373 revised on</p>	
<p>format A3</p>		<p>metric 1 / 1</p>	

REV122024